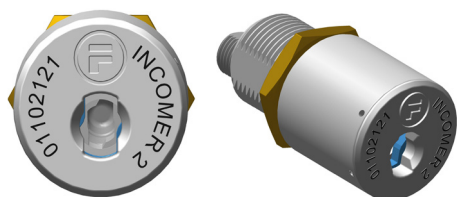


Switchgear Interlocking

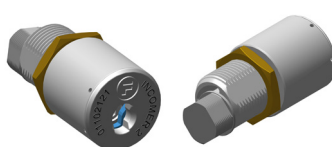
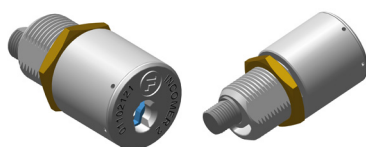
Mini Offset Basic Lock



SL/SM- FC/FA-11

The SL Mini Offset Basic Lock is designed to lock switchgear in the open and/or closed position and can be adapted to suit switchgear by using manufacturers' fitting kits.

SL/SM- FC/FA-17



Mini Offset Basic Lock

- Radial disc tumbler lock providing high strength and reliability in harsh environments (e.g. mining).
- Front face laser marked with code (up to 20 characters) and differ information, both controlled by Fortress database to ensure system and site integrity.
- Many character types available including Chinese.
- The key is freed in the 12 o'clock and 6 o'clock position.
- Once freed the SL key can integrate into a full size CL system.
- Clockwise and Anti-Clockwise movement available.
- Over 5,000 non-masterable combinations available.
- Over 5,000 masterable combinations available.

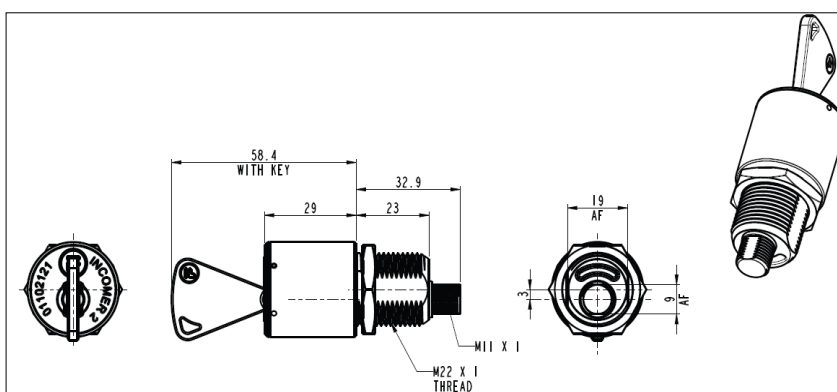
Technical Specification

Lock Construction	Zinc Alloy with a durable satin chrome finish to the lock casing.
Internal Lock Construction	Stainless Steel
B10d	5,000,000

Part No. / Ordering Information

Part No.	Master Series Part No.	Movement	Spindle Interface Size	Spindle Length
SL-FC11	SM-FC11	90° Clockwise	M11	9mm
SL-FA11	SM-FA11	90° Anti-Clockwise	M11	9mm
SL-FC17	SM-FC17	90° Clockwise	M17	9mm
SL-FA17	SM-FA17	90° Anti-Clockwise	M17	9mm

SL/SM - FC11



SL/SM - FC17

