

DATA CENTRE INTERLOCKING

PRODUCT DETAILS

SS1 Solenoid Controlled Keyswitch

SS1 Solenoid Keyswitch 220VAC

*3915.27

Mini Earless Basic Lock

Mini Earless Basic Lock

*3403.01

SEQUENCE OF OPERATIONS

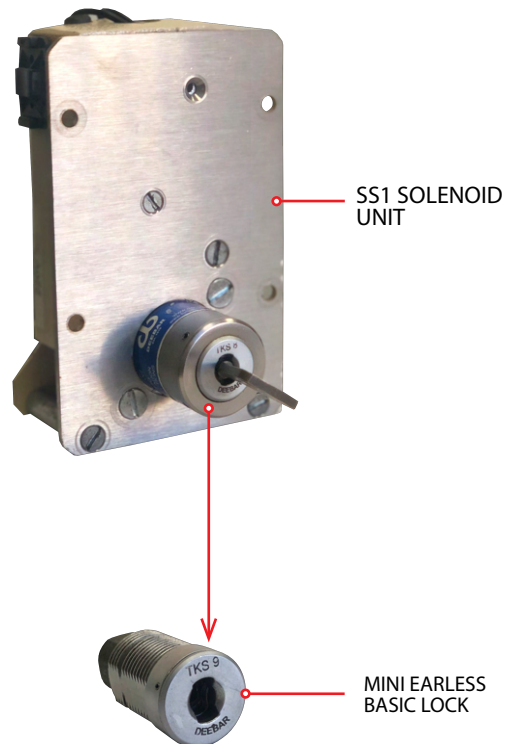
The SS1 Solenoid unit is installed into the Control Data Panel.

Once the Panel has been isolated and the static reader cleared, the key can be removed from the Solenoid.

The key is then taken and inserted into the Mini Earless Lock which is installed onto the Schneider Breaker.

Insert the key then press the trip button. The key will remain trapped.

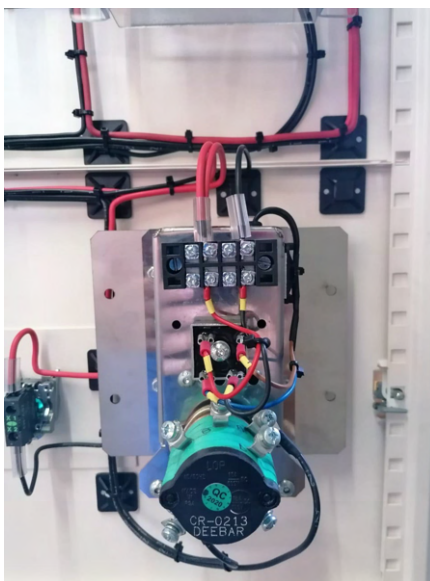
PRODUCT IMAGES



APPLICATION IMAGES



SS1 OUTSIDE PANEL



SS1 INSIDE PANEL



LOCK ON SCHEIDER BREAKER