

LIGHTING

Illumination plays a critical role in mining because miners depend on proper illumination to safely perform their work and to see various mine and machinery-related hazards. Deebar offers various forms of mine lighting and indication as required in today's mining environments.



LH115 LOCO LIGHT

The LH115 Loco Light is used on mine Loco's and is manufactured from a cast alloy material.

The unit can accommodate, either 12V - 55Watt or 24V - 75Watt Seal Beam.

Seal Beam and anti vibration rubber mounting pad are not included with the unit, but can be supplied as optional extras.

Product Code:	Description:
*9600.00	Aluminium Housing (Excluding Lamp)



RH115 LOCO LIGHT

The RH115 Loco Light is used on underground Loco's and is manufactured in a robust rubber housing with a steel base plate moulded in.

The unit accommodates an 115V Seal Beam.

Seal Beam and anti vibration rubber mounting pad are not included with the unit, but can be supplied as optional extras.

Product Code:	Description:
*9602.00	Rubber Loco Light c/w Ring (Excluding Lamp)



D-LITE SINGLE LENS

This single Lens D-Lite is used for indication, mainly in a mining or harsh environment.

This energy efficient unit is available in various colours and is IP68 rated and robust in its design, being:

- Waterproof, shockproof and corrosion proof
- Maintenance free.

Other colours available on request.

Product Code:	Description:
*9139.11	LED Red 24V / 48V
*9139.14	LED Red 110V
*9139.23	LED Red 220V
*9139.12	LED Green 24V / 48V
*9139.15	LED Green 110V
*9139.22	LED Green 220V
*9144.03	LED White 24V / 48V
*9139.77	LED White 110V
*9144.04	LED White 220V



ROBOT D-LITES

Used mainly in mines or in harsh environments for Robot Indication. The LED PCB is encapsulated into the Terluran ABS housing with an epoxy resin making the product IP68. This D-Lite is robust, waterproof, shockproof, corrosion proof and energy efficient.

This unit can be supplied in the following format:

- Standard red & green lens - cross & tick (Cross in red and tick in green)
- Stop & Walk (Stop in Red and Walk in Green)

Two units bolted together make up a double aspect (front & back). Both the cross & tick and the stop & walk can be supplied in a vertical format with a protection hood.

Product Code:	Description:
*9139.01	Single Aspect (LED) 24V / 48V
*9139.04	Single Aspect (LED) 110V
*9139.03	Single Aspect (LED) 220V
*9138.01	Double Aspect (LED) 24V / 48V
*9139.02	Double Aspect (LED) 110V
*9139.73	Double Aspect (LED) 220V

Electrical Specification	21mA @ 110V
Current Consumption	25mA @ 220V



PILOT LIGHT HOLDER

This robust 50mm diameter lamp holder used on Lockbell units for mine signalling.

The Pilot light is fitted with either a red or green lens and accommodates Pigmy Lamps or Cluster LED units.

Product Code:	Description:
*0108.06	Pilot Light Holder (Red Lens)
*0108.05	Pilot Light Holder (Green Lens)
*0108.12	Pilot Light Holder (Clear Lens)

LED CLUSTER LIGHTS



This 16 LED cluster is used for illumination on Belltronic Lockbell signalling units in the Deebar Pilot Light or the Crabtree Pilot Light.

Available in either a B22 bayonet base or E27 screw base.
Available in either red, green or amber LED.

Product Code:	Description:
*0106.02	32V Red B22
*0106.03	32V Green B22
*0105.05	110V Red B22
*0105.06	110V Green B22
*0106.06	220V Red B22
*0106.07	220V Green B22

MINI INDICATION LIGHTS



This single Lens indication light is used on Lockbell units for mine signalling.

This energy efficient unit is available in various colours and is IP68 rated and robust in its design, being:

- Waterproof, shockproof and corrosion proof
- Maintenance free.
- Available in 24-48V, 110V, 220V.

Product Code:	Description:
*0105.08	MIL Red 24-48V
*0105.09	MIL Green 24-48V

BEACON SCATTER LIGHTS - c/w STUD



Fully encapsulated in a polycarbonate transparent housing, the unit is visible at 360°.

The unit can be supplied in flashing or non-flashing. Fitted with a 16mm stud and lock nut ensures robust mounting, The LED PCB is encapsulated into the housing with a clear epoxy resin ensuring IP68 status. Available in various colours and voltages.

Available in various colours and voltages.

Product Code:	Description:
*9139.32	220V AC Flashing Red (Big)
*9139.34	220V AC Flashing Green (Big)
*9139.72	220V AC Flashing Red (Small)
*9139.38	220V AC Flashing Green (Small)
	Other voltage on request

BEACON SCATTER LIGHTS - ES TYPE



Fully encapsulated in a polycarbonate transparent housing, the unit is visible at 360°.

The unit can be supplied in flashing or non-flashing. Fitted with a E27 screw base. The LED PCB is encapsulated into the housing with a clear epoxy resin ensuring IP68 status.

Available in various colours and voltages.

Product Code:	Description:
*9139.81	Scatter Light ES Type

REFUGE BAY LIGHT



The unit consists of an Enclosure with the word REFUGE BAY engraved on an Opaque Perspex.

In the case of an emergency, the remote emergency switch which can be situated in the Refuge Bay can be activated, lighting up the Refuge Bay Light, this will also activate the siren and beacon flashing light.

In the event of a power failure, the units automatically lights up with a siren and flashing lights.

The unit will visually and audibly indicate the position of the Refuge Bay to any rescuers.
The unit is fitted with a battery backup of up to 10 hours in the event of a power failure.

Product Code:	Description:
*9503.02	110V AC Unit
*9503.00	220V AC Unit

LIGHTING



DANGER INDICATION BOX

The Danger Box enclosure is manufactured in stainless steel and fitted with E27 ES porcelain lamp holders wired to a terminal lock to accommodate 3 x ES lamps.

Danger/Gevaar/Ingozi is silk screened on to an opaque perspex.

Product Code:	Description:
*9134.00	Single Aspect
*9135.00	Double Aspect



LEVEL INDICATION BOX

The Level Indication Box enclosure is manufactured in stainless steel and fitted with E27 ES porcelain lamp holders wired to a terminal block to accommodate 3 x ES lamps.

Any inscription to suit customer's specification can be silk screened on to the opaque perspex

Product Code:	Description:
*9134.00	Single Aspect
*9135.00	Double Aspect



ROBOT BOX - LED

Single Aspect

This Robot Box is manufactured in stainless steel and fitted with a red & green lens on either side. Behind each lens the unit has two LED, PC Boards.

Double Aspect

This unit is similar to the above single aspect but has two additional lenses on the opposite side of the enclosure making it visible from both sides.

Product Code:	Description:
*9122.00	Double Aspect (LED) 24V / 48V
*9123.01	Double Aspect (LED) 110V
*9123.18	Double Aspect (LED) 220V
*9123.00	Single Aspect (LED) 24V / 48V
*9123.02	Single Aspect (LED) 110V
*9123.03	Single Aspect (LED) 220V



ROBOT BOX - INCANDESCENT

Single Aspect

This Robot Box is manufactured in stainless steel and fitted with a red & green lens on either side. Behind each lens the unit has E27 porcelain holders to accommodate 2 incandescent lamps or energy saving lamps.

Double Aspect

This unit is similar to the above single aspect but has two additional lenses on the opposite side of the enclosure making it visible from both sides.

Product Code:	Description:
*9128.00	Single Aspect Incandescent
*9129.00	Double Aspect Incandescent



VML LIGHTING

The VML fittings operate with an Electronic Ballast and suitable for 4 pin 13Watt energy saving compact fluorescent lamps and is available as follows:

- VML-ES for use on Existing Fittings
- VML-NI for use in new installations

Product Code:	Description:
*9703.01	VML - ES
*9703.02	VML - NI



RUBBER HAULAGE LIGHTING HOLDER

The Haulage Lighting Holder is manufactured from hard moulded, non-toxic and flame proof rubber and can be supplied with either:

- ES Lamp Holder to accommodate an energy saving/ standard lamp or
- 5 Amp or 16 Amp 3 Pin Socket to plug in an alternative fitting

These holders can be fitted to make up lengths of lighting cable with holders fitted at any specified spacing to suit customer's exact specification.

The armouring of cable is not cut which ensures earth continuity and overall mechanical strength throughout the length of the cable.

Product Code:	Description:
*9700.11	Holder c/w Edison Screw
*9700.12	Holder c/w 5 Amp Socket
*9700.13	Holder c/w 16 Amp Socket



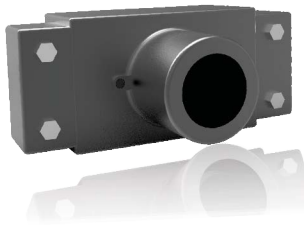
ALUMINIUM HAULAGE LIGHTING BOX

The Haulage Lighting Box is a cast aluminium holder and is fitted with an E.S Lamp Holder to accommodate an energy saving / standard lamp.

The Haulage Lighting Box has a mechanical gland on each end for terminating to cable.

These holders can be fitted to make up lengths of lighting cable with holders fitted at any specified spacing to suit customer's exact specifications.

Product Code:	Description:
*9700.00	2 Way
*9701.00	3 Way
*9702.00	4 Way



THRU BOX - HAULAGE LIGHTING BOX

The Haulage Lighting Holder is a cast aluminium holder and is fitted with either:

- E.S Lamp Holder to accommodate an energy saving / standard lamp or
- 16 Amp 3 Pin Socket.

These holders can be fitted to make up lengths of lighting cable with holders fitted at any specified spacing to suit customer's exact specifications.

The armouring of cable is not cut which ensures earth continuity and overall mechanical strength throughout the length of the cable.

Product Code:	Description:
*9713.00	Aluminium Thru Box - ES
*9713.01	Aluminium Thru Box - 16 Amp Socket



ALUMINIUM BLASTING BOX

The Blasting Box is used as a connection box when doing blasting underground. The unit is manufactured in cast aluminium with 2 mechanical glands for cable termination and an insulated lid with "quick connecting" spring loaded brass or stainless steel terminals.

Product Code:	Description:
*9711.00	c/w Glands
*9710.00	w/o Glands



CCG BLASTING BOX

This Blasting Box is also used as a connection box when blasting underground. The unit is manufactured in cast aluminium with 2 mechanical glands for cable termination with the "quick connecting" spring loaded brass or stainless steel terminals fitted through insulated bushes in the side of the unit.

Product Code:	Description:
*9711.04	Blasting Box c/w Stainless Steel Terminal