

MILD STEEL ENCLOSURES

Deebar are fully equipped with a light steel fabrication department, specialising in producing quality mild steel and stainless steel enclosures, as well as any other specially designed product to meet the customers exact requirements. Using mild steel, galvanized steel, 3CR12, stainless steel, Deebars sheet metal department manufacturers Electrical Enclosures, Control Boxes, Cabinets, etc. Catering mainly for the Electrical Communication, Mining, Electrical and Associated industries.

- Enclosures are manufactured either to IP55 or IP65 standards.
- We also offer Sheet Metal Manufacturing processes such as; guillotining, cutting, CNC punching, bending, notching, spot welding, Co2 welding, grinding, powder coating and assembly.

All products are manufactured from quality material, ensuring quality and strength throughout. Deebars manufacturing process starts with drawings in AutoCAD 2D or 3D and then produced on CNC punching machine such as Trumpf 500 with interchangeable punches, a CNC Bending Brake, guaranteeing consistency throughout our entire product range.

Finishes include: Powder Coating, Plain Stainless Steel or Brush finish.

Enclosures and products made from

- Mild Steel
- 3CR12 Stainless Steel
- 304 Stainless Steel
- 316 Stainless Steel

STANDARD MILD STEEL ENCLOSURES

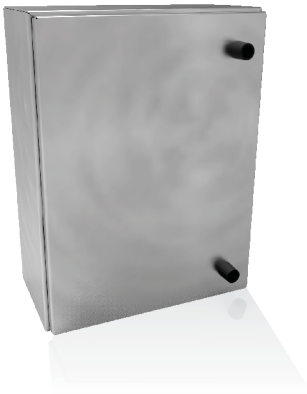


The Standard IP55 Mild Steel enclosure is fitted with:

- Concealed hinges.
- Removable Gasket Gland Plate (Optional)
- Chassis
- Earth Studs
- 6mm² catches (25mm Ø mounting)
- Supplied with Accessory Kit which Includes Mounting Brackets
- Painted Electric Orange

Product Code	Enclosure (mm) H x W x D	Box with Metal Door	Door Guage
5200.41	250 x 200 x 140	EM-2520D140	1mm
5200.42	300 x 250 x 200	EM-2520D140	1mm
5200.39	400 x 300 x 200	EM-4030D200	1.2mm
5200.40	500 x 400 x 200	EM-5040D200	1.5mm
5200.43	600 x 400 x 260	EM-6040D260	1.5mm
5200.44	700 x 500 x 260	EM-7050D260	1.5mm
5200.45	800 x 600 x 260	EM-8060D260	1.5mm
5200.46	1000 x 600 x 320	EM-1060D320	1.5mm
5200.47	1000 x 800 x 320	EM-1080D320	1.5mm
5200.48	1200 x 800 x 320	EM-1280D320	1.5mm

IP55 STEEL ENCLOSURE



The IP55 enclosure is powder coated electric orange and is equipped with:

- Loose bolt on wall mounting brackets
 - Concealed hinges
 - Drive locks 6mm
 - Earth stud
 - 6mm² catches (25mm Ø mounting)
 - Enclosures can also be supplied with a glass door and inner door kit (painted white).
- When ordering, add * asterix followed by GD and/or DK to part no.

Size H x W x D	Part No	With Glass Door Add	With Inner Door Kit Add
350 x 250 x 190	F101-55		
450 x 300 x 240	F102-55	* GD	* DK
550 x 400 x 240	F103-55	* GD	* DK
650 x 450 x 300	F104-55	* GD	* DK
750 x 550 x 300	F105-55	* GD	* DK
950 x 700 x 300	F106-55	* GD	* DK
1150 x 850 x 300	F107-55	* GD	* DK

IP65 STEEL ENCLOSURE



The IP 65 enclosure is powder coated electric orange and is equipped with:

- Loose bolt on wall mounting brackets
 - Concealed hinges.
 - Drive locks 6mm
 - Earth stud
 - Enclosures can also be supplied with a glass door and inner door kit (painted white).
- When ordering, add * asterix followed by GD and/or DK to part no.

Size H x W x D	Part No	With Glass Door Add	With Inner Door Kit Add
350 x 250 x 190	F201-65		
450 x 300 x 240	F202-65	* GD	* DK
550 x 400 x 240	F203-65	* GD	* DK
650 x 450 x 300	F204-65	* GD	* DK
750 x 550 x 300	F205-65	* GD	* DK
950 x 700 x 300	F206-65	* GD	* DK
1150 x 850 x 300	F207-65	* GD	* DK